

## Annexure – A

### Technical Specification for Temporary Site Office (Prefabricated)

#### 1. Scope of Work

The contractor shall manufacture, supply, transport, erect and commission Prefabricated Temporary Site Office units complete in all respects at the designated project sites.

The scope includes foundation preparation, supply of materials, erection, internal partitioning, electrical installation, plumbing, sanitary fittings, and commissioning of the site offices.

#### 2. Type of Structure

The Temporary Site Office shall be constructed using Prefabricated Modular Office Units with insulated wall and roof panels suitable for site conditions.

#### 3. Overall Size

The overall size of each Temporary Site Office shall be:

Length × Width × Height: 15 m × 9 m × 3 m

**Total floor area: 135 sq. m (minimum).**

#### 4. Wall Panels

Wall panels shall be PUF (Polyurethane Foam) insulated sandwich panels with adequate thickness to provide:

- thermal insulation
- sound insulation
- weather resistance

Panels shall be factory manufactured and properly sealed during installation.

#### 5. Roof

Roof shall consist of insulated G.I. sheet roofing system with adequate slope for rainwater drainage.

The roof assembly shall include:

- galvanized iron sheet
- thermal insulation layer
- structural framing system

#### 6. Internal Layout

The internal layout shall be as per Layout Drawing of Temporary Site Office enclosed at Annexure – A1.

The office shall include the following minimum facilities:

- Office rooms / rest rooms with attached toilet – 03 Nos.
- Conference / Visitor Room – 01 No.
- File / Document / Instrument Storage Room – 01 No.
- Drawing / Computer Workstation Room – 01 No.
- Pantry / Kitchen – 01 No.
- Toilets / Lavatories – as per requirement
- Veranda / Common circulation area

## **7. Materials and Quality**

All materials used in the construction of the temporary site offices shall be new, unused, and of good quality.

The completed structure shall provide:

- adequate ventilation
- thermal insulation
- sound insulation
- weather protection suitable for site conditions.

## **8. Flooring**

The flooring of the temporary site office shall be finished with suitable flooring such as cement board / vinyl / tile / equivalent durable material, capable of supporting office equipment and daily use.

## **9. Electrical Installation**

The prefabricated office units shall include complete electrical wiring and accessories, including but not limited to:

- LED lighting fixtures
- AC units
- ceiling fans
- power sockets
- distribution board
- switches and wiring
- earthing system

All electrical work shall comply with relevant IS standards and safety regulations.

## **10. Sanitary and Plumbing Works**

Each toilet shall be provided with necessary sanitary fixtures and plumbing connections, including:

- WC
- wash basin
- taps
- water supply lines
- drainage system

## **11. Transportation and Installation**

The contractor shall be responsible for:

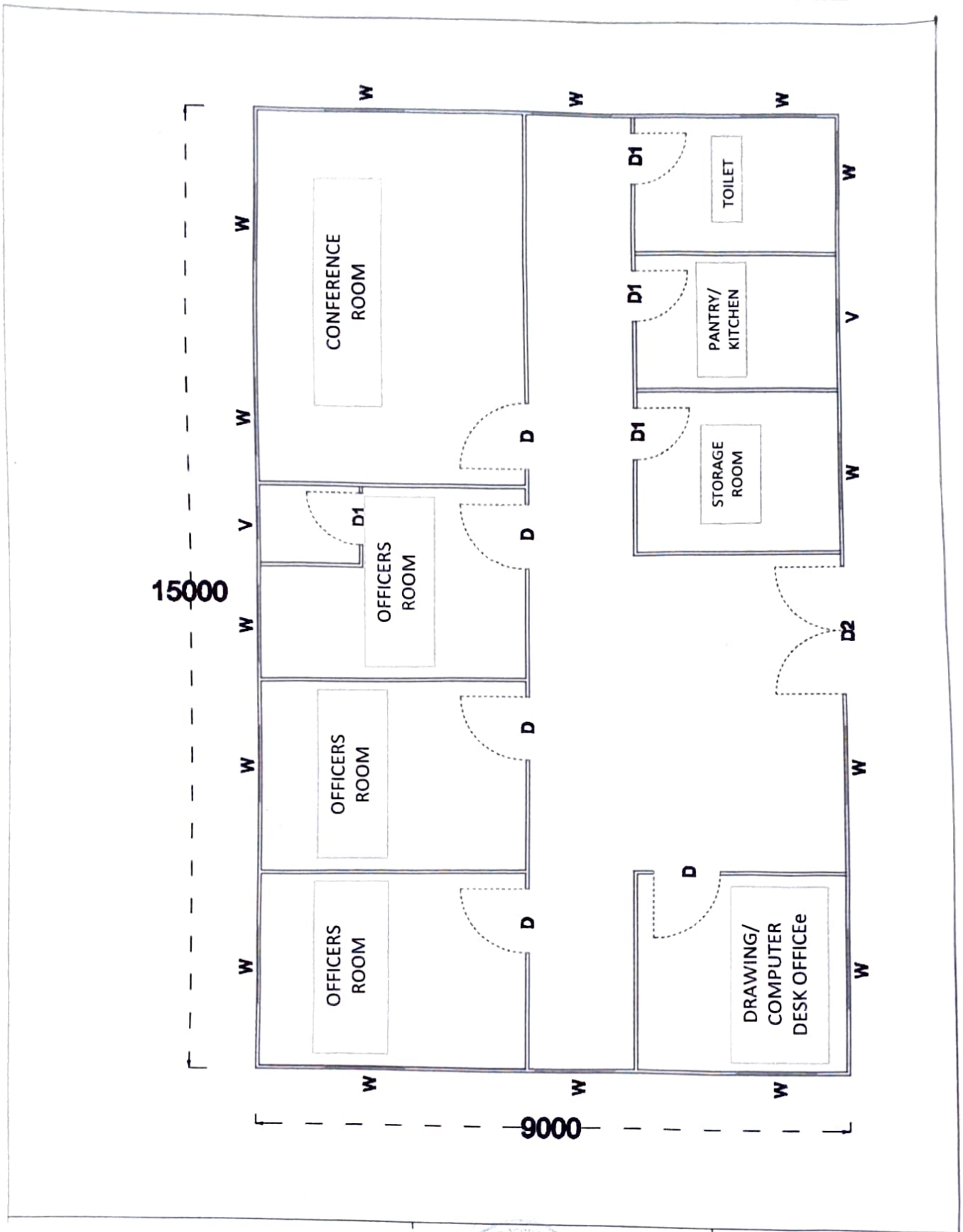
- fabrication of prefabricated units
- transportation of materials
- delivery to project sites
- erection and installation

All works including foundation, erection, electrical works, plumbing, and finishing shall be completed by the contractor.

## **12. Completion**

The Temporary Site Offices shall be delivered, erected, and made fully functional and ready for use at the respective project sites.

Layout Drawing of Temporary Site Office/Camp Office



*J. Chakrapathy*  
M(P)/BBJ