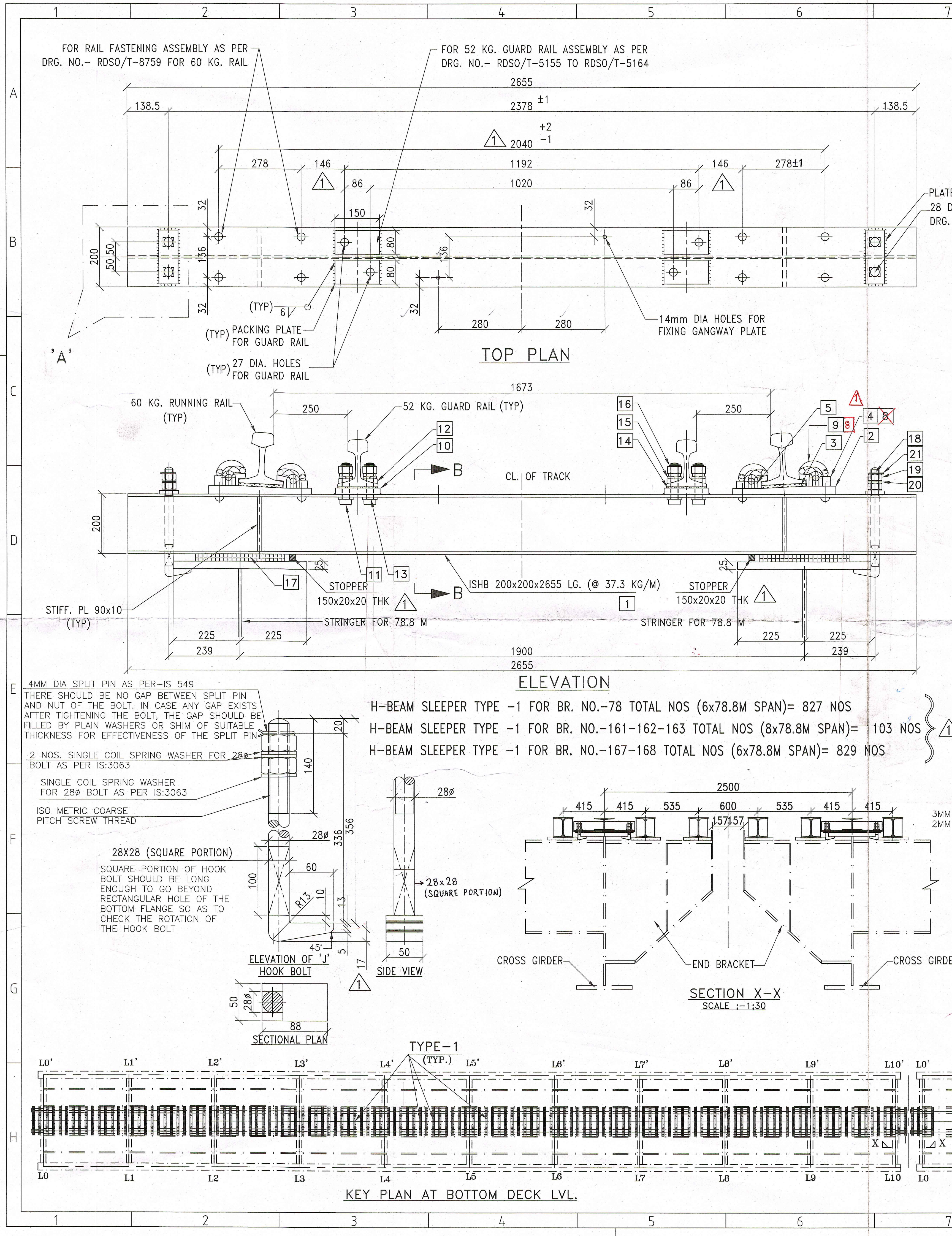


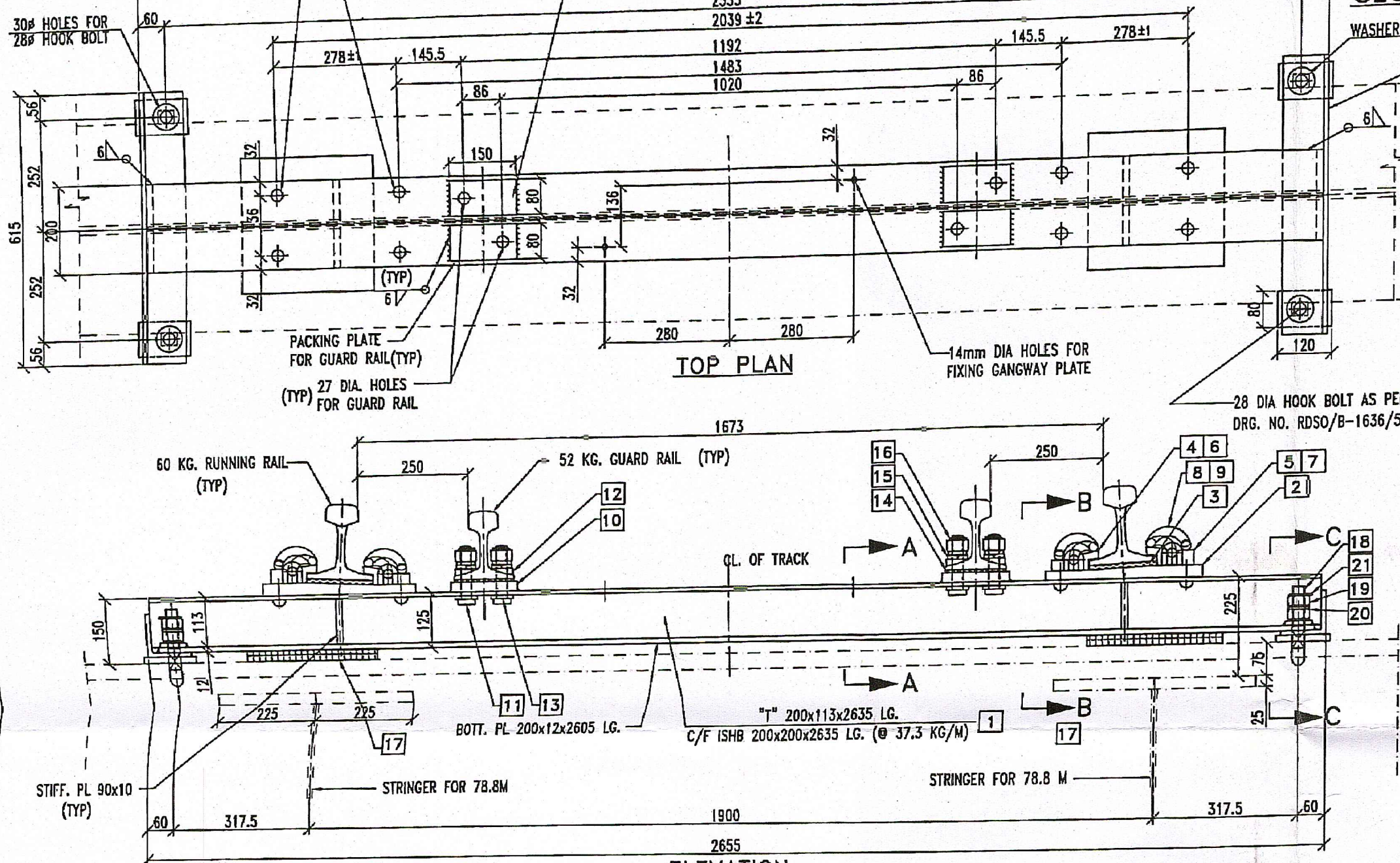
Bill Of Quantity

Sl. No.	Description	Unit	Qty
1	<p>Supplying, fabricating, transporting galvanized H-Beam sleepers as per BBJ's Drawing No. 2150/HSB/61.0M/20, 2150/HBS/78.8M/34, 2150/HBS/78.8M/34/1 & 2150/HBS/78.8M/34/2 along with other relevant RDSO Drawings to different Bridge Sites i.e. Br. No. 15, 19, 64, 104, 78, 161 & 167 – Bairabi-Sairang stations (all are RDSO standard Girder) in Mizoram as per delivery schedule with RDSO specification no. BS45 thereto complete with all fittings, fixtures and fastening (RDSO Drawing No. T-5155 to 5164) including the cost of all steel sections, all fittings & fixtures and fastening, galvanized MS pad plates, galvanized bolts, nuts washer, spring washer, riveted canted bearing plates as per Railway suitable for 25 Ton axle loading standard.</p> <p>The rate is inclusive of the provision of steel pack plates and short height H-Beam Sleepers as to be required for 61.0M & 78.8 M span and/or other spans as per approved span.</p> <p>The structural steel to be supplied by the Contractor for fabrication of steel H-beam (ISHB) sleepers shall conform to IS-2062-2011, E250, Grade B fully killed from SAIL, TISCO, and Vizag Steel Plant or any other sources approved by N.F. Railway. The source to be declared citing non-availability of material from the aforesaid supplier.</p> <p>The rate is inclusive of inspection and testing charges of all components of sleepers including all fittings & fixtures and fastening, galvanization etc. from the reputed laboratory/ organization.</p> <p>The rate should also be inclusive of all taxes including GST.</p>	Sets	475



FOR RAIL FASTENING ASSEMBLY AS PER
DRG. NO.- RDSO/B-1636/4 & RH.983 FOR 60
KG. RAIL & RH.1122 FOR 52 KG RUNNING
RAIL(M/S. RAHEE INDUSTRIES LTD, KOLKATA)

FOR 52 KG. GUARD RAIL ASSEMBLY AS PER
DRG. NO.- RDSO/T-5155 TO RDSO/T-5164
2655



SECTION ON A-A

SECTION ON B-B

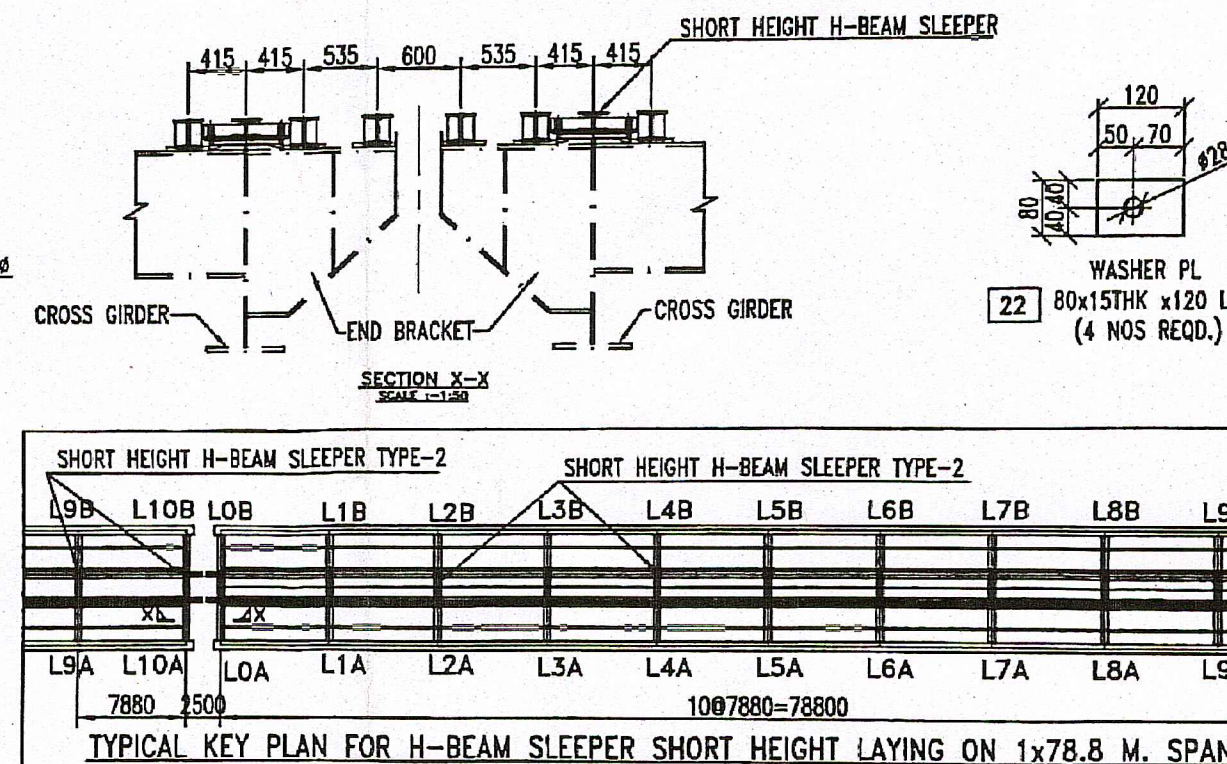
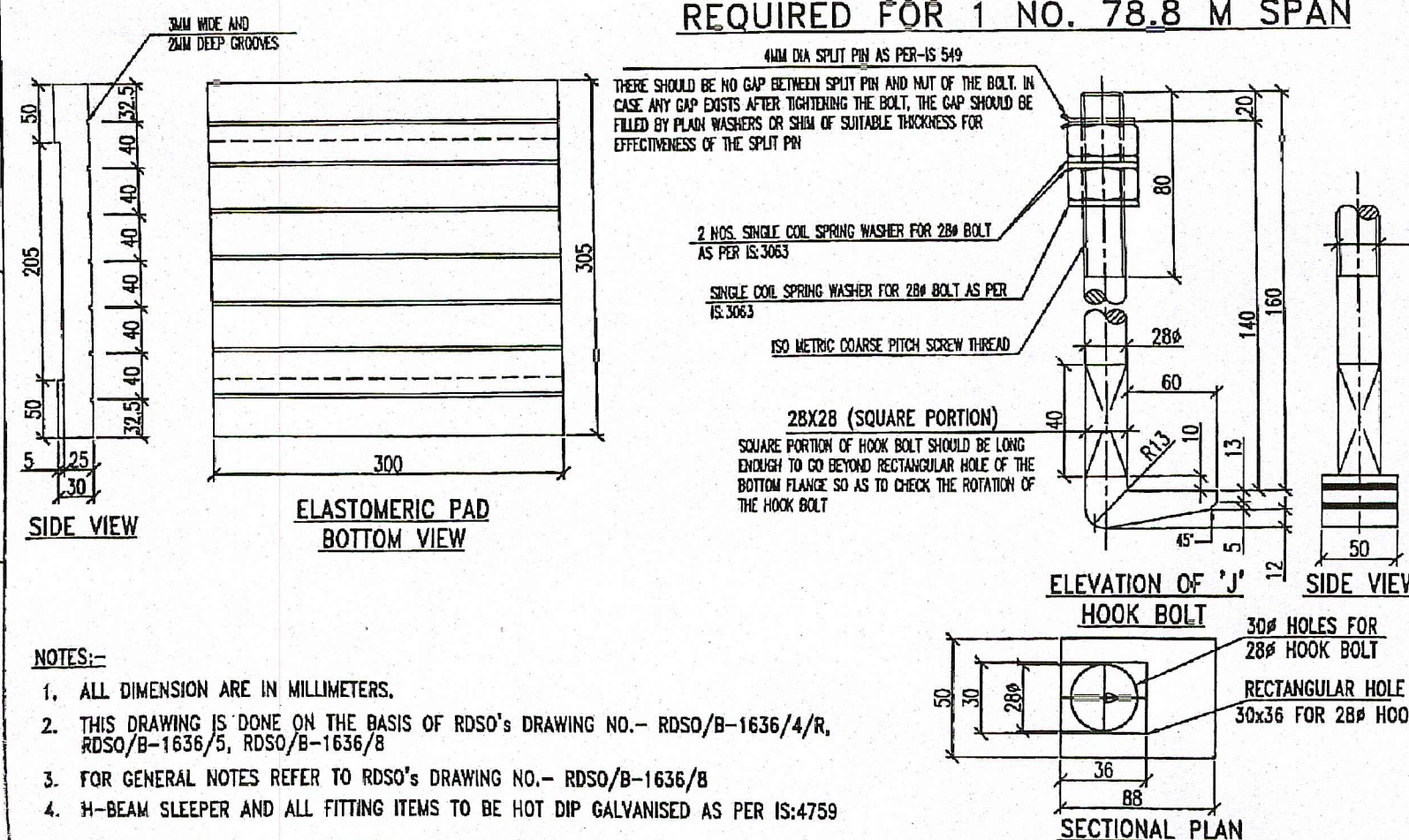
SECTION ON C-C

ITEM REQUIREMENT FOR 1 SET SHORT HEIGHT H-BEAM SLEEPER

ITEM NO.	DESCRIPTION	DRAWING NUMBER	SPECIFICATION	QTY PER SLEEPER
1	H-BEAM STEEL SLEEPER 2635 M LENGTH (SHORT HEIGHT)		IS:2062-2011 Gr. B	1
2	STEEL BASE PLATE	RDSO/T-8760	IRS FOR 12 mm. THICK GROOVED RUBBER PAD (PROVISIONAL)	2
3	RAIL PAD WITH EMBEDDED STEEL PLATE	RDSO/T-8761	IRS SPECIFICATION FOR SPECIAL CAST LINER (PROVISIONAL-2019)	2
4	SPECIAL CAST LINER (INNER) FOR 60 kg. (UIC) RAIL	RDSO/T-8762	IRS T-31-2018	4
5	SPECIAL CAST LINER (OUTER) FOR 60 kg. (UIC) RAIL	RDSO/T-8763	IRS T-31-2018	4
6	ELASTIC RAIL CLIP MKIII	RDSO/T-3701	IS:2062-2011 GR.B0	4
7	ELASTIC RAIL CLIP FOR FISH PLATED JOINTS (ERC-J)	RDSO/T-4158	IRS T-23	4
8	PACKING PLATE 80x150x22 (FOR GUARD RAIL)	RDSO/T-5155 TO RDSO/T-5164	IS:5372	4
9	BOLT AND NUT (FOR GUARD RAIL)	RDSO/T-5161	IS:5372	4
10	TAPER WASHER (FOR 52 kg. GUARD RAIL)	RDSO/T-5162	IRS Specification for 6 mm. Thick GR. Pad (Provisional-1997)	2
11	TAPER STEEL WASHER (FOR GUARD RAIL)	RDSO/T-5163	IRS T-42-2020	4
12	6 mm. THICK GROOVED RUBBER PAD (FOR GUARD RAIL)	RDSO/T-10773	SUITABLE, IS:549	4
13	SINGLE COIL SPRING WASHER (FOR GUARD RAIL)	RDSO/B-1636/5	RDSO/M & C/RP-197/03	2
14	TAPERED SPLIT PIN FOR GUARD RAIL	RDSO/B-1636/5		4
15	ELASTOMERIC PAD 300x305x30/25	RDSO/B-1636/5		4
16	#28 HOOK BOLT x 190 Lg.	RDSO/B-1636/5		8
17	NUT FOR #28 HOOK BOLT	RDSO/B-1636/5	IS:3063-1994	12
18	SINGLE COIL SPRING WASHER FOR #28 HOOK BOLT	RDSO/B-1636/5	SUITABLE IS:549	4
19	TAPERED SPLIT PIN FOR HOOK BOLT	RDSO/B-1636/5		4

* ITEM 7 TO BE USED WHERE FISH PLATED JOINTS ARE REQUIRED.

11 NOS SHORT HEIGHT H-BEAM SLEEPER MKD TYPE-2
REQUIRED FOR 1 NO. 78.8 M SPAN



SIGNATURE & DATE	SIGNATURE & DATE	SIGNATURE & DATE	SIGNATURE & DATE

CONTRACTOR: **BBJ-ABCI JV**

CLIENT: N.F. RAILWAY	PROJECT: 25 TON AXEL LOADING-2008 OPEN WEB WELDED THROUGH TYPE GIRDER (6+8+6) x 78.8M SPAN FOR BR NO- 78,161-162-163,167 IN CONNECTION OF NEW BG RAILWAY LINE FROM BHARABI TO SAIRANG, MIZORAM
TITLE: SHORT HEIGHT H-BEAM STEEL SLEEPER FOR 60 KG. RUNNING RAIL AND 52 KG. GUARD RAIL FOR 78.8M SPAN	SCALE: 1:10
DRAWN BY: A.K.SETH	DATE: 11.08.22
CHECKED BY: S.CHATTERJEE	DATE: 11.08.22
APPROVED BY:	DATE:
B.B.J. ORDER NO.- 2150	DRG. NO. 2150/HBS/78.8M/34/2
REV. 0	SHEET: A2

- NOTES:-
- ALL DIMENSION ARE IN MILLIMETERS.
 - THIS DRAWING IS DONE ON THE BASIS OF RDSO'S DRAWING NO.- RDSO/B-1636/4/R, RDSO/B-1636/5, RDSO/B-1636/8
 - FOR GENERAL NOTES REFER TO RDSO'S DRAWING NO.- RDSO/B-1636/8
 - H-BEAM SLEEPER AND ALL FITTING ITEMS TO BE HOT DIP GALVANISED AS PER IS:4759